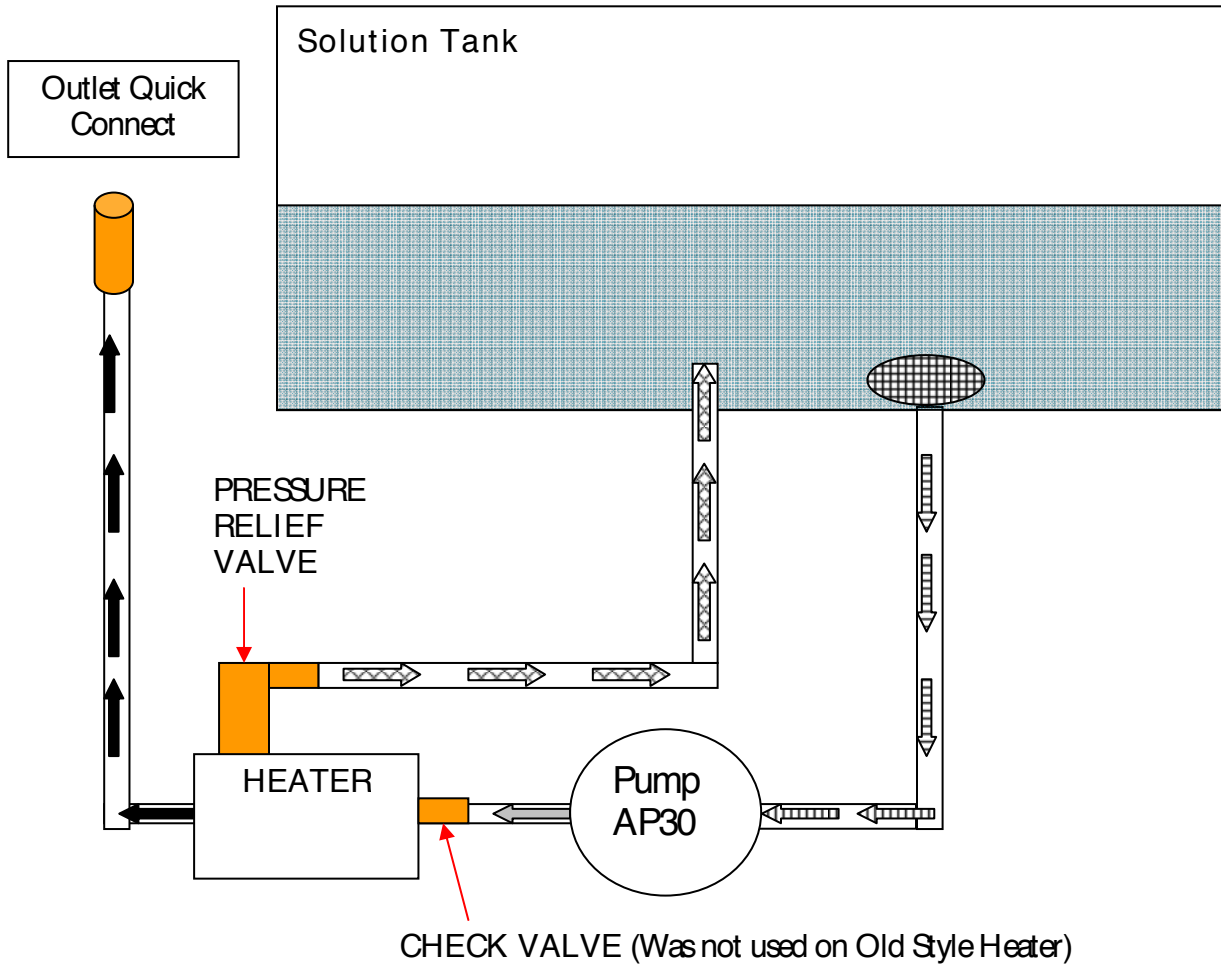
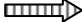


MA51H


Solution Flow Path




Denotes incoming water flow




Denotes Cold Water flow in pressure hose



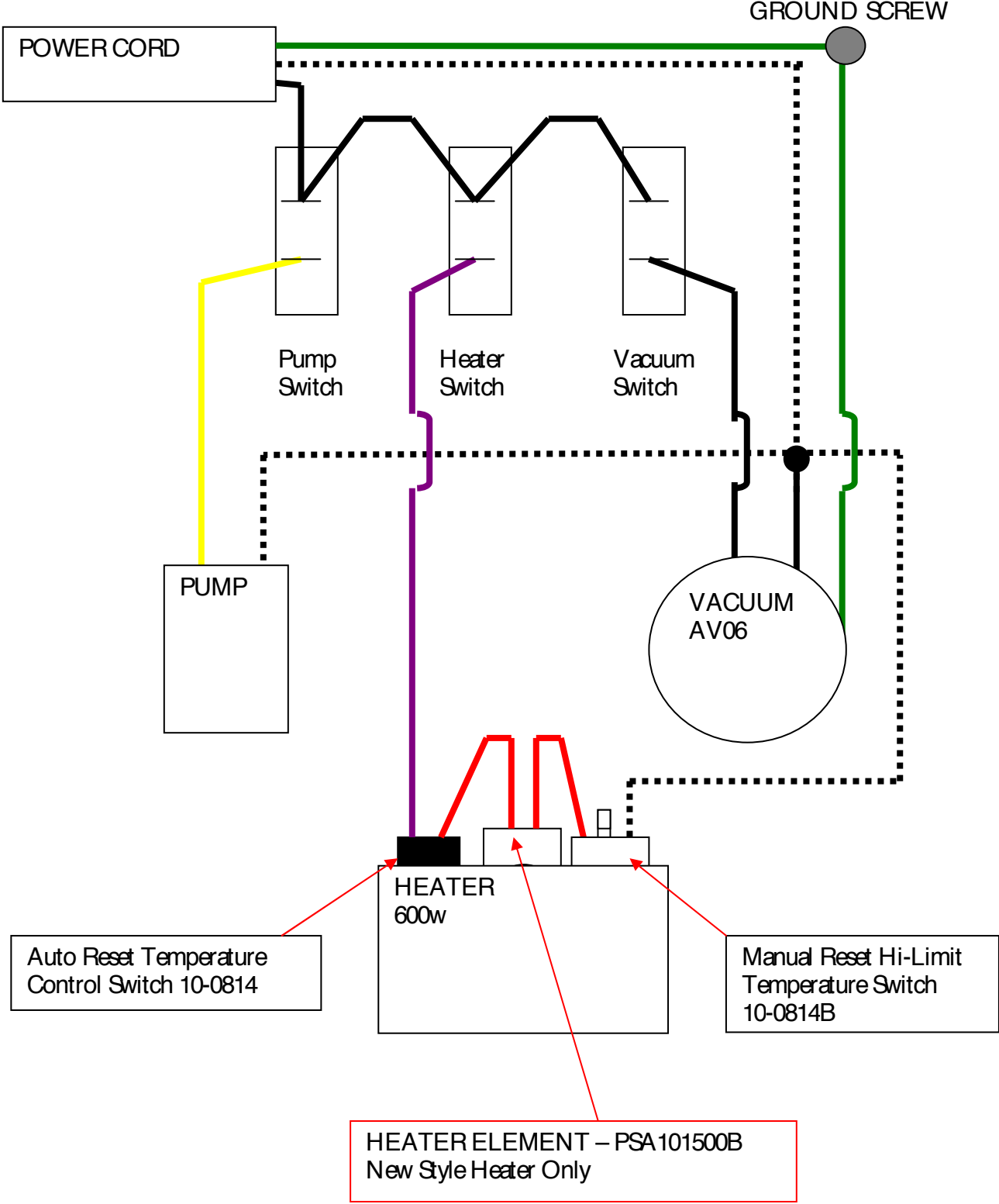
Denotes Heated Water flow in pressure hose



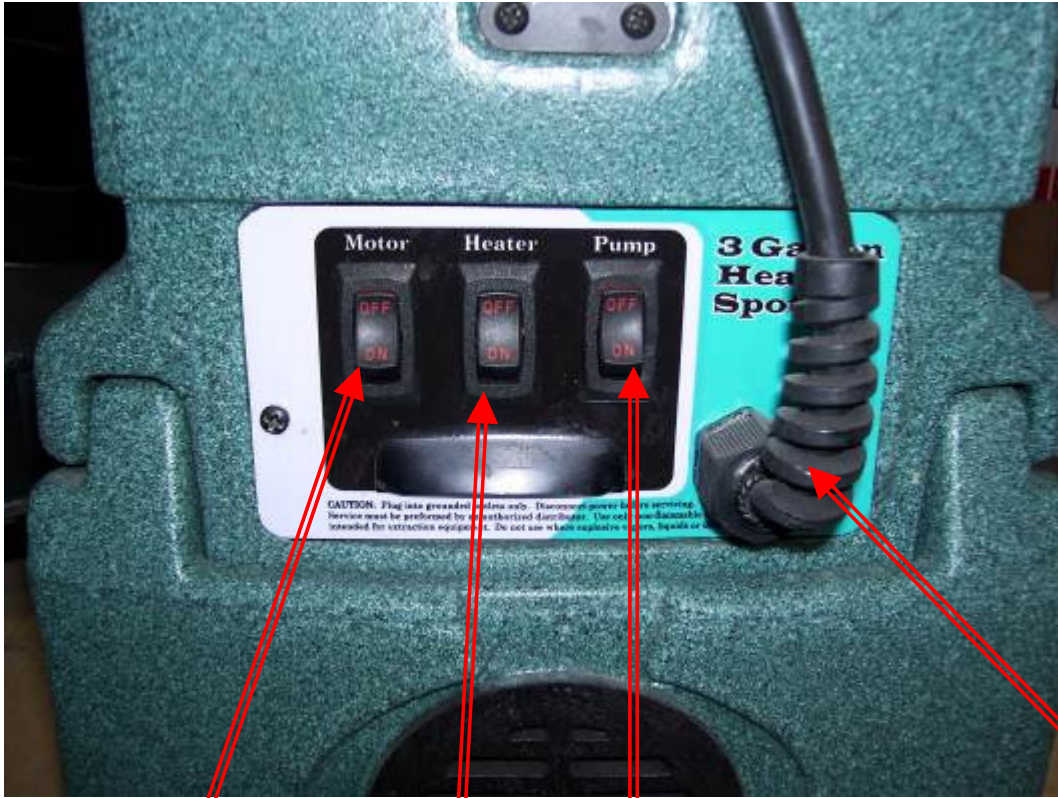
Denotes Heated Water by-pass flow from heater pressure relief



MA51H Wiring Diagram with Heater



MA51H with HEATER SWITCH PANEL:



Vacuum Switch
When the switch is turned to the ON position power is supplied to the vacuum motor only.

Solution Pump Switch
When the switch is turned to the ON position power is supplied to the solution pump motor only.

When not using solution (Extracting only), do not turn this switch ON.

Heater Switch
When the switch is turned to the ON position power is supplied to the solution heater only. Always turn pump switch on first and be sure water is flowing to the tool before turning heater ON.

Turn heater off and spray tool for a minute to cool off heater before turning pump off.

When not using solution (Extracting only), do not turn this switch ON.

Power Cord

Parts

Replacement parts available for repair of your Power X ProSpot Extractor.

Power X Spotter Pump – AP30

SOLUTION INLET
1/8" FPT

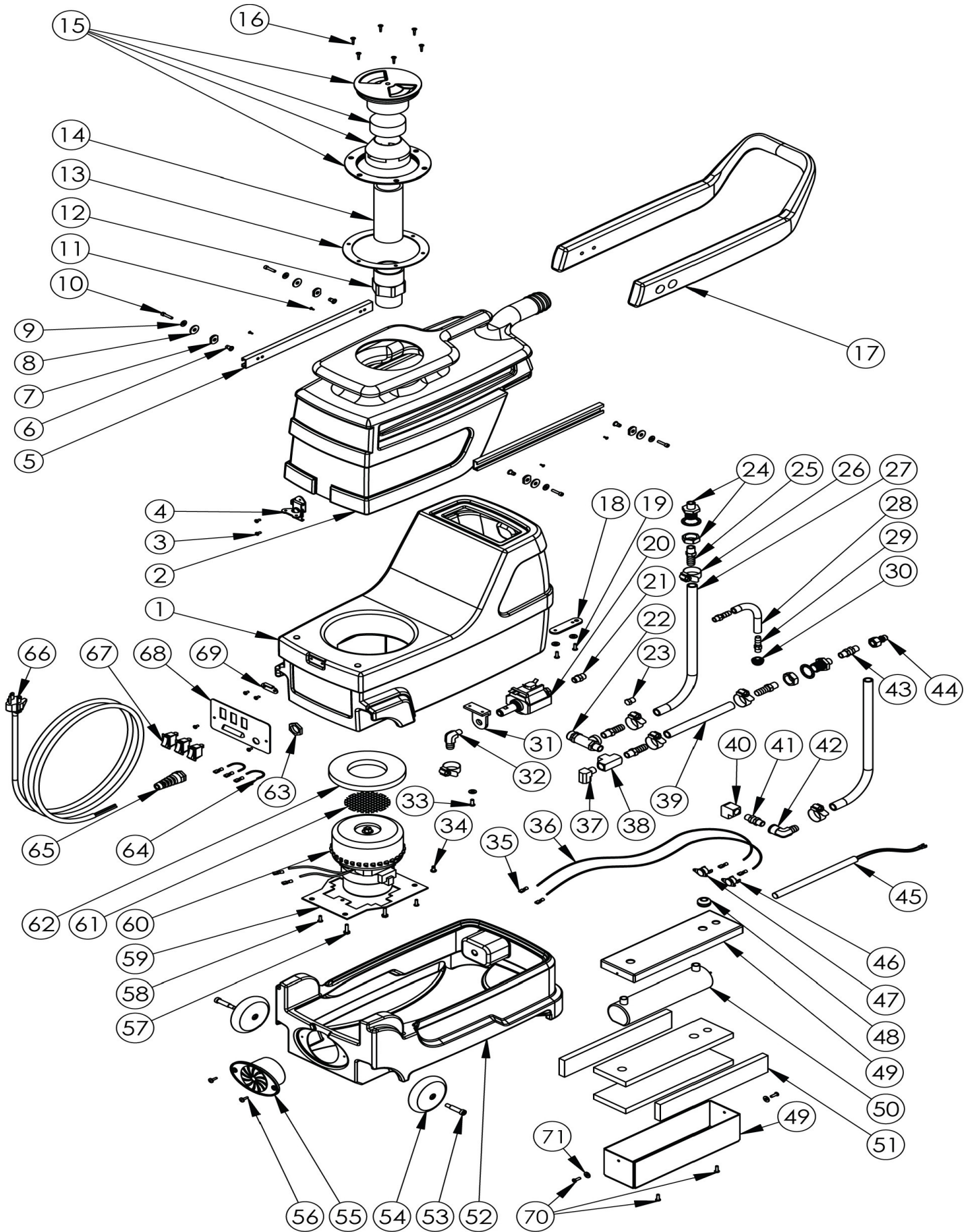
SOLUTION OUTLET
1/8" FPT



Power X Spotter Vacuum Motor – AV06



MA51H Power X Spotter with Heater



	Item #	MA51H Component Description	Qty Needed
1	NM5090-ST	Solution Tank	1
2	NM5090-RT	Recovery Tank	1
3	10-0383	6/32 x 1/4 Phil Pan Blk Screw (Latch & Switch Plate)	6
4	10-0400-D	Latch	1
5	10-0412	CChannel For Spotter	2
6	10-0414	Rivet For Spotter Handle	4
7	10-0384	.125 Thick Nylon Washer	4
8	10-0385	.06 Thick Nylon Washer	4
	NM5032	Flat Washer #8 SAE	5
10	10-0216	Allen Head Screw	4
11	10-0379	8-32 x 3/8" Screw	4
12	10-0405	1 1/2" PVC SCH40 Slip Thread	1
13	10-0302-A	Gasket Tank Hatch	1
14	10-0416-A	ABS Stand Pipe Black 1 1/2"	1
15	10-0304	Spotter Hatch, Cap, Filter and Float Assembly	1
16	10-0419	Screw For Spotter Hatch	6
17	NM5090-HANDLE	Handle - Black	1
18	10-0831	S/R Bracket	1
19	10-0832	S/R Strap Bolts	2
20	AP30	Pump For Spotter	1
21	BF070	Nipple 1/8" Hex Brass	1
22	PSA100901	Pressure Relief Valve 175psi	1
23	BF220	Brass Plug 1/8"	1
24	NM5087	Bulkhead Fitting 1/4" Brass	2
25	BF020	Barb 3/8" x 1/4" MPT Brass	4
26	PH07	Hose Clamp	6
27	10-0843	Hose 3/8" ID Black LP	1
28	10-0434	Threaded Hose for Spotter	1
29	NA0839	Barb Nylon Straight 1/8 NPT X 1/4" Barb	4
30	NA0840	1/8" Strainer for Spotter	1
31	10-0301	L Bracket For Spotter	1
32	10-0828	90 Deg Brass Elbow 1/8" MPT	1
33	10-0022	Screw	3
34	10-0017	Deflector Screw	1
35	PA076	Female Spade Connector Insulated - Blue	10
36	T-WPUR	Purple Wire	
37	BF282	Elbow 90 Deg 1/4" Street M-F	1
38	BF252	Tee 1/4" Street M-F-F	1
39	10-0843	Hose 3/8" ID Black LP - sold per inch	24"
40	BF292	Elbow 90 Deg 1/4" F-F	1
41	NM5069	Check Valve 1/4" MPT	1
42	80-0014	Elbow 90 Deg 1/4" FPT x 3/8" barb	1
43	BF082	1/4" Close Nipple Brass	1
44	AH102B	1/4" Male Quick Connect	1
45	PSA101500B	Heater - Element Only	1
46	10-0814	Temperature Switch Auto Reset	1
47	10-0814-B	Temperature Switch Manual Reset	1
48	10-0907	Strain Relief for Heater	1

	Item #	MA51H Component Description	Qty Needed
49	10-0906	Heater Box Only	1
50	10-0900	Heater Body Only	1
51	10-0801-G	Insulation for Heater Box	1
	PSA100910	Heater Assembly Complete with all Fittings & Temperature Switches	1
	PSA001	High Pressure Hose Assembly	1
52	SP-3-HS-GFNGRAN	Base Spotter Skirt w/ Heat	1
53	10-0387	5/16 x 1" Socket Head Bolt (For Wheels)	2
54	10-0303	Roller Blade Wheel	2
55	10-0822	Exhaust Grate	2
56	10-0419-A	Screw For Exhaust Grate	2
57	10-0014	Motor Screws	2
58	10-0380	Screw 10-32 x 3/8"	2
59	10-1024	Vac Motor Mounting Plate	1
60	AV06	Vacuum Motor	1
61	10-0386	Stamped Motor Screen	1
63	PS10-1030	Spotter Motor Gasket	1
64	10-0027-A	Strain Relief Nut For Spotter	1
	T-WBLA	Black Wire	
65	10-0027	Pigtail Strain Relief Spotter	1
66	10-0448-B	20 Ft. Spotter/Air Mover Cord	1
67	PDRI01	On/Off Rocker Switch	3
68	10-1026	Back Switch Plate (with heater)	1
69	10-0400-C	Latch Keeper 10-0400-C	1
70	NM4061	Screw 10-32 x 1/2" BH SOC SS	3
71	NM4255	Washer Flat #10 SS	2
	NM4081	NUT 10-32 NYLOCK SS	1

MA51H



SPOTTER HATCH COVER WITH FILTER
BOTTOM VIEW
(Part of 10-0304 Assembly)



SPOTTER HATCH, COVER, FILTER & FLOAT ASSEMBLY
10-0304
GASKET – 10-0302-A
SCREWS – 10-0419 (QTY 6)

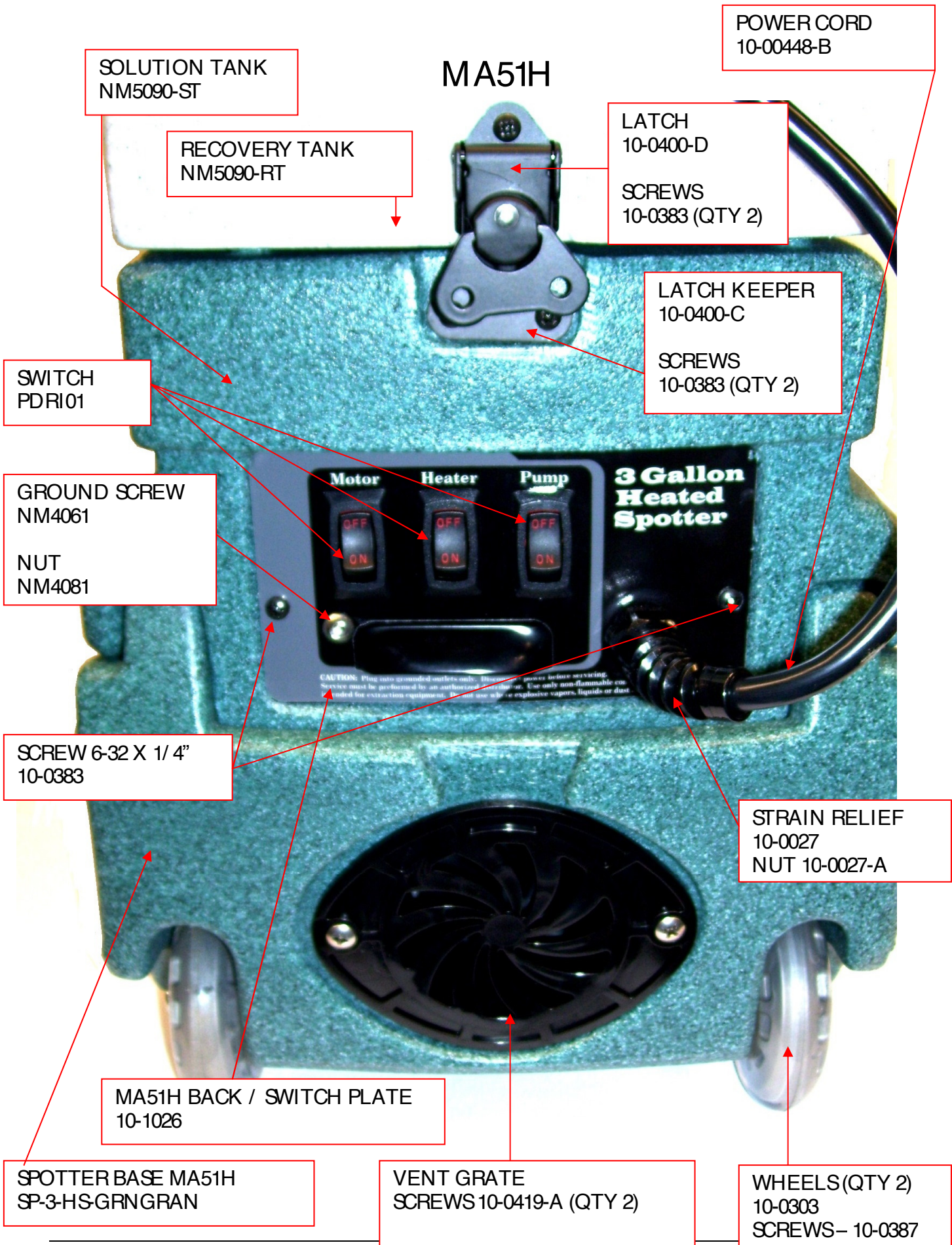
SPOTTER HANDLE - BLACK
NM5090-HANDLE

SOLUTION TANK
NM5090-ST



RECOVERY TANK
NM5090-RT

SPOTTER BASE W/ HEAT
SP-3-HS-GRNGRAN



POWER CORD
10-00448-B

SOLUTION TANK
NM5090-ST

MA51H

RECOVERY TANK
NM5090-RT

LATCH
10-0400-D
SCREWS
10-0383 (QTY 2)

LATCH KEEPER
10-0400-C
SCREWS
10-0383 (QTY 2)

SWITCH
PDRI01

GROUND SCREW
NM4061
NUT
NM4081

Motor Heater Pump

OFF ON OFF ON OFF ON

3 Gallon Heated Spotter

CAUTION: Plug into grounded outlets only. Disconnect power before servicing. Service must be performed by an authorized technician. Use only non-flammable containers for extraction equipment. Do not use above explosive vapors, liquids or dust.

SCREW 6-32 X 1/4"
10-0383

STRAIN RELIEF
10-0027
NUT 10-0027-A

MA51H BACK / SWITCH PLATE
10-1026

SPOTTER BASE MA51H
SP-3-HS-GRNGRAN

VENT GRATE
SCREWS 10-0419-A (QTY 2)

WHEELS (QTY 2)
10-0303
SCREWS - 10-0387

MA51H

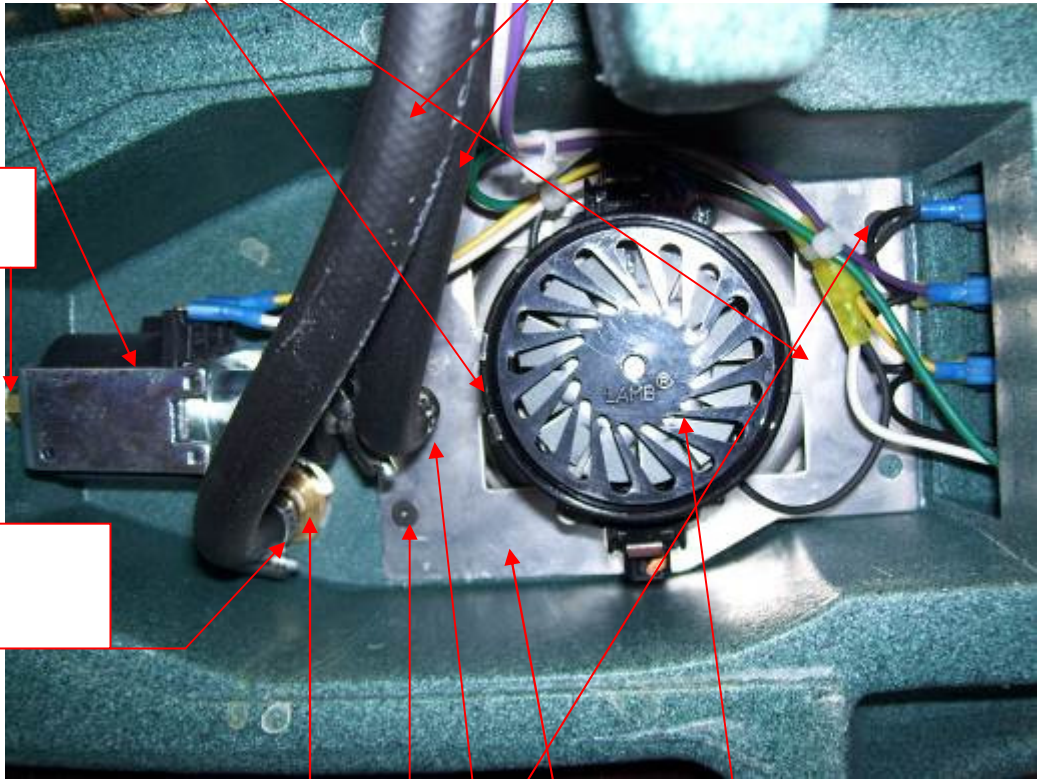
SCREW VAC MOTOR MOUNT (QTY 2)
10-0014

HOSE 3/8" ID HI-TEMP BLACK

PUMP
AP30

1/8" HEX NIPPLE
BR070

BARB 3/8" X 1/4" MPT
BR020



BULKHEAD FITTING 1/4"
NM5087

VACUUM MOTOR
AV06

SCREW VAC MOUNT PLATE (QTY 2)
10-0380

PLATE VAC MOTOR MOUNT
10-1024

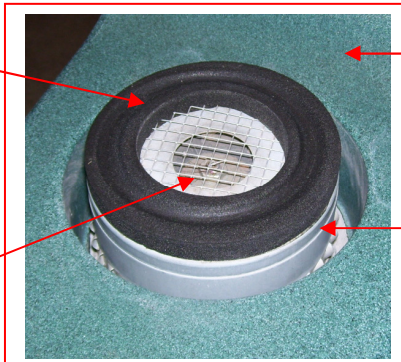
90 DEGREE BRASSELBOW 3/8" BARB X 1/8" MPT
10-0828

VACUUM GASKET
PS10-1030

SOLUTION TANK
NM5090-ST

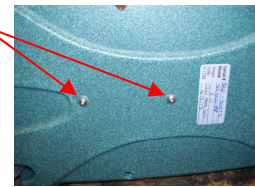
VACUUM SCREEN
10-0386

VACUUM MOTOR
AV06



MA51H New Heater Assembly

Heater is secured to Spotter Base with two screws & Flat Washers:
 2 - SCREW 10-32 x 1/2" BH SOC SS - NM4061
 2 - WASHER FLAT # 10 SS - NM4255



HOSE HP 1/4" ID HI-TEMP BLUE
 1/4" JIC FITTINGS - PSA001

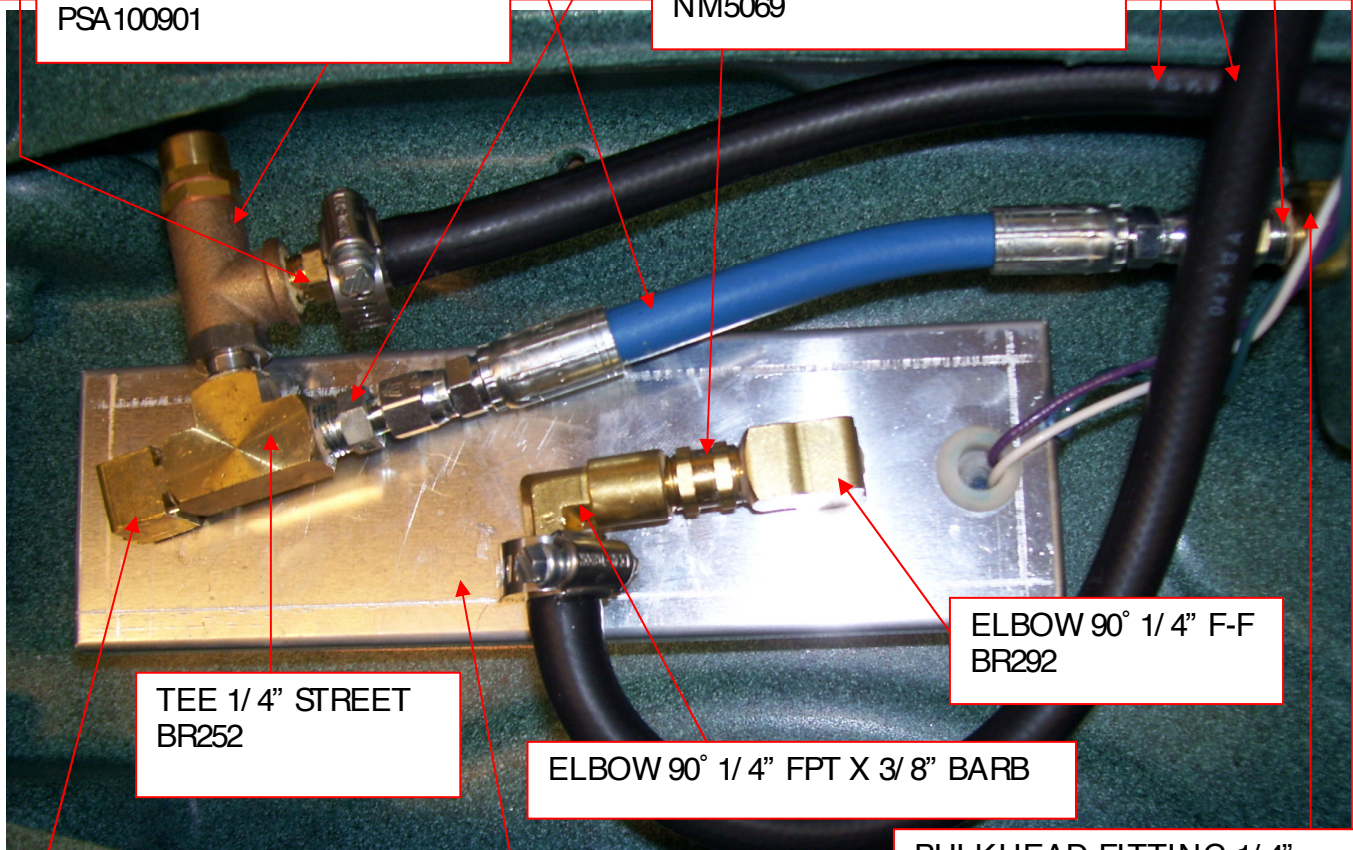
HOSE LP 3/8" ID HI-TEMP BLACK
 10-0843 (Sold per inch)

BARB 3/8" X 1/4" MPT
 BR020

ADAPTER 1/4" MPT X 1/4T M FLARE
 BR126

PRESSURE RELIEF VALVE
 PSA100901

CHECK VALVE 1/4" MPT
 NM5069



TEE 1/4" STREET
 BR252

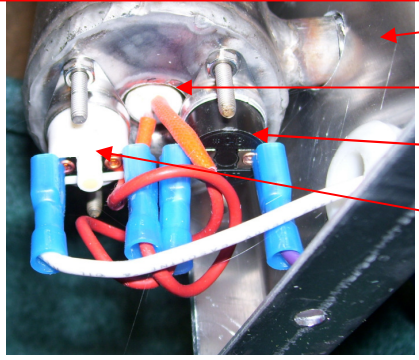
ELBOW 90° 1/4" FPT X 3/8" BARB

ELBOW 90° 1/4" F-F
 BR292

ELBOW 90° 1/4" STREET
 BR282

HEATER 600W
 PSA100910
 COMPLETE WITH FITTINGS

BULKHEAD FITTING 1/4"
 NM5087



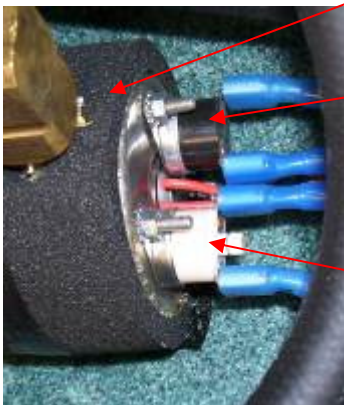
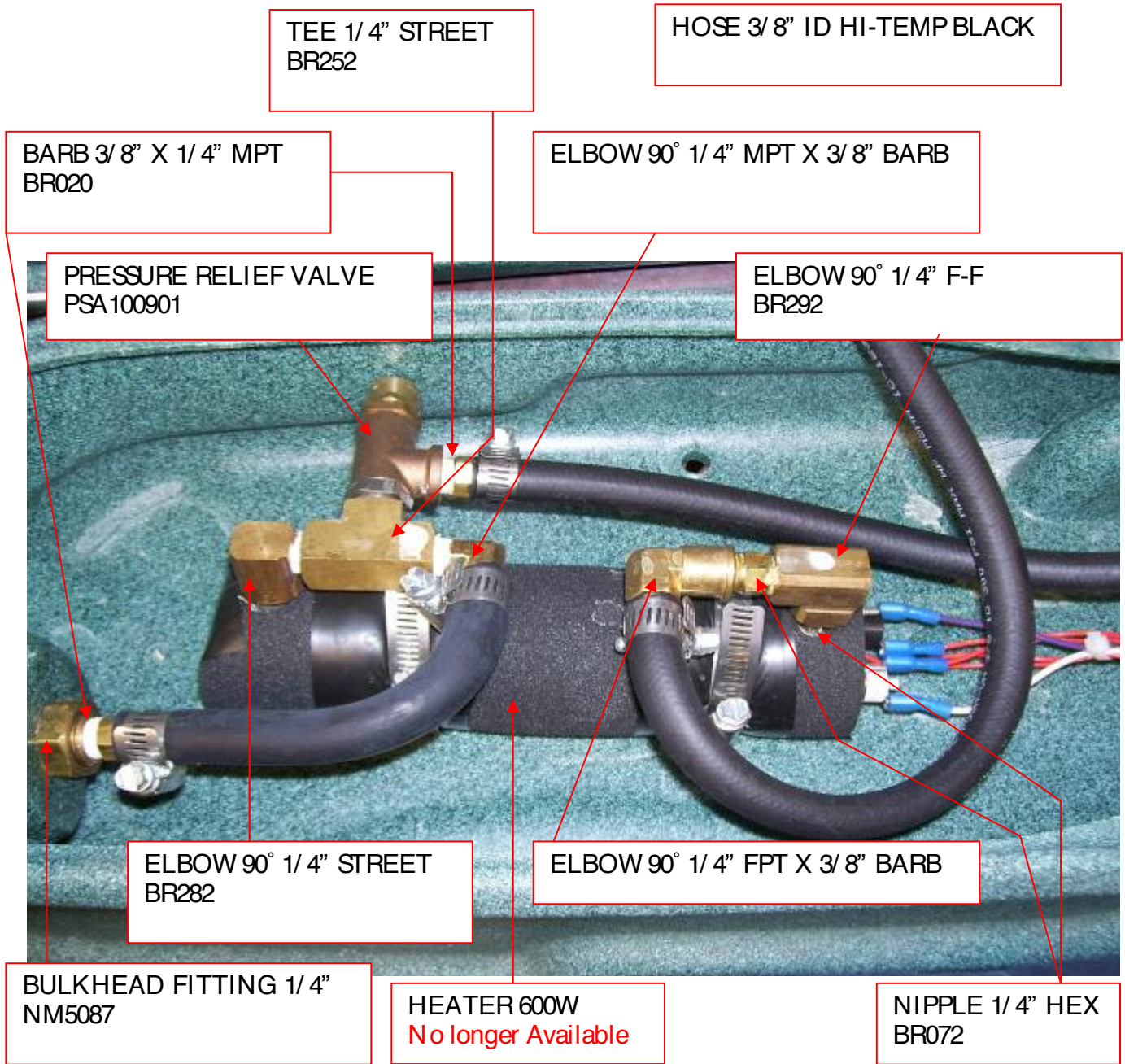
HEATER OUTER SHELL ONLY - PSA100900

HEATER ELEMENT ONLY - PSA101500B

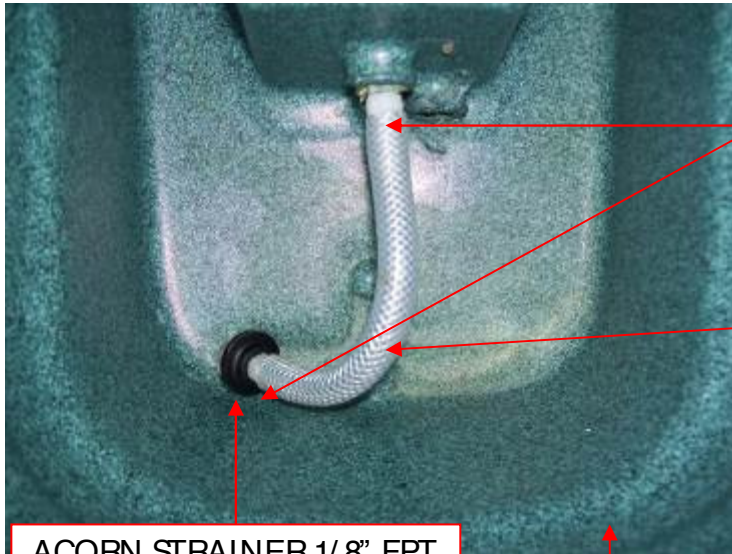
TEMPERATURE SWITCH AUTO RESET
 10-0814

TEMPERATURE SWITCH MANUAL RESET
 10-0814-B

MA51H Old Style Heater



MA51H



BARB 1/4" X 1/8" MPT
NA0839

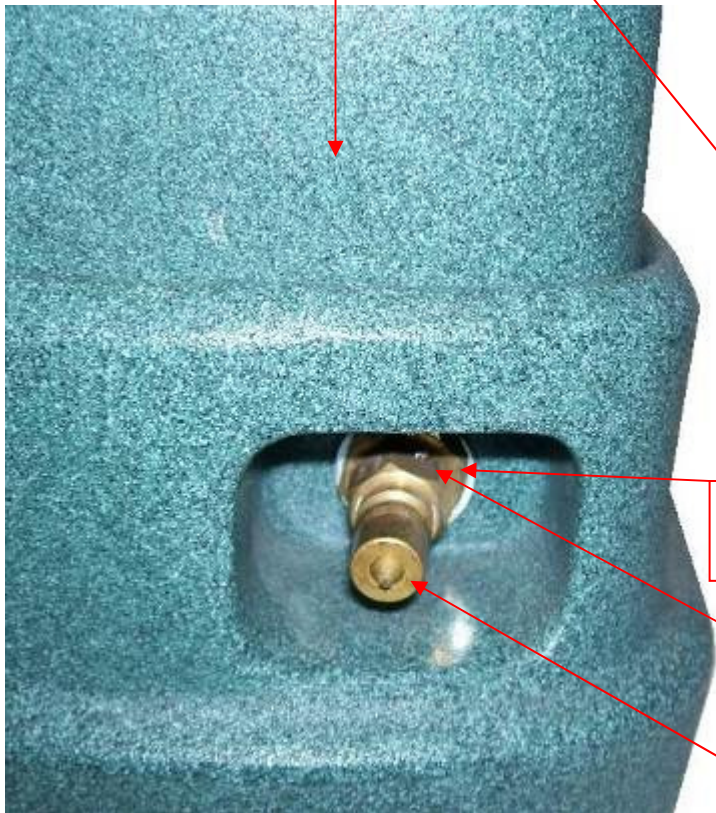
1/4" ID HOSE
10-0434

ACORN STRAINER 1/8" FPT
NA0840

RECOVERY TANK
NM5090-RT

SOLUTION TANK
NM5090-ST

SPOTTER BASE MA51H
SP-3-HS-GRNGRAN

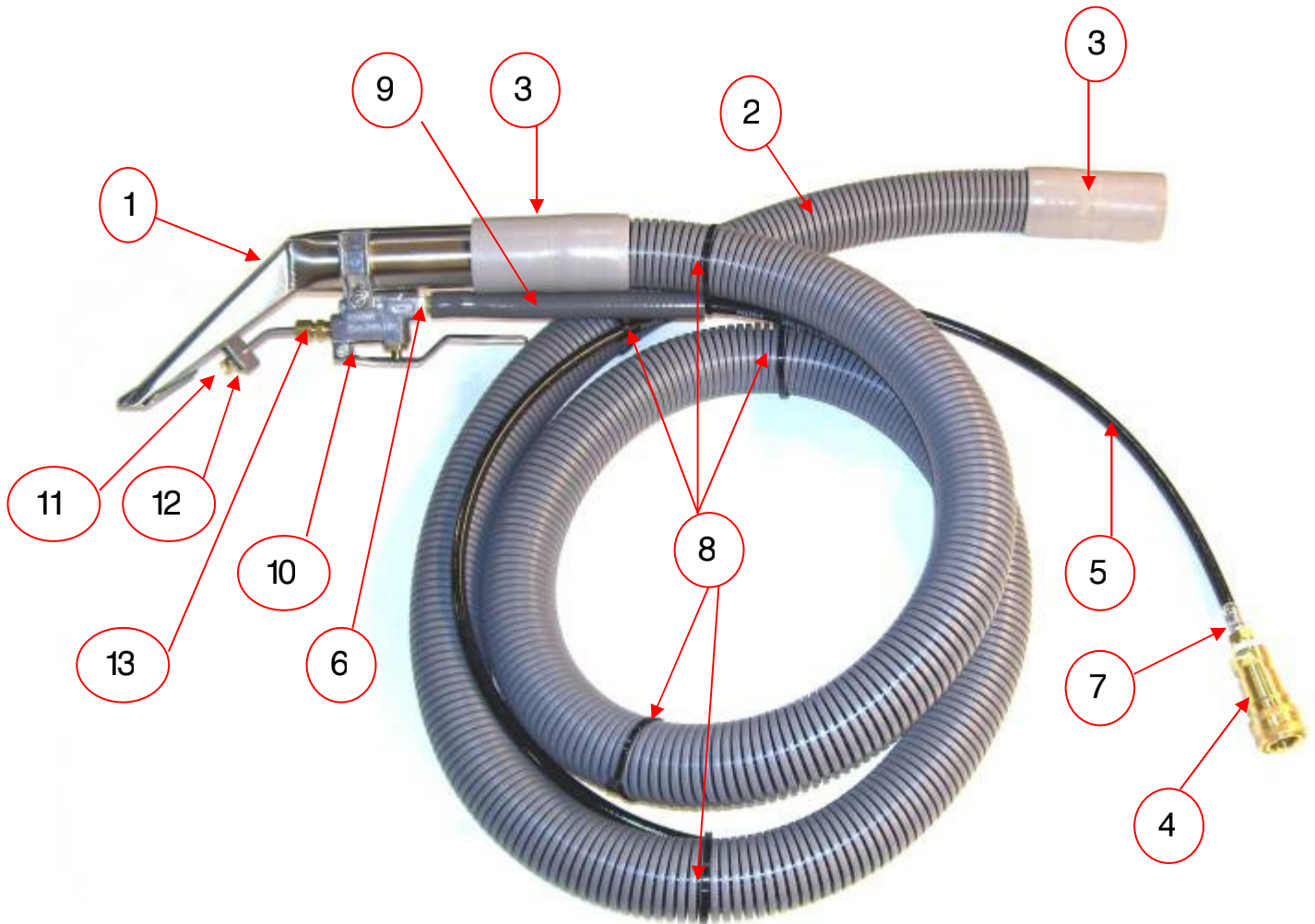


BULKHEAD FITTING 1/4"
NM5087

NIPPLE 1/4" HEX
BR072

1/4" MALE QUICK CONNECT
AH102B

AW55H HOSE & TOOL ASSEMBLY



	ITEM#	Description	QTY
1	PA205	3.5" SS Upholstery Tool	1
2	AH35	1-1/4" Gray Vacuum Hose (Sold per foot)	7'
3	PP08-805088	1-1/4" Hose Cuff	2
4	AH101B	1/4" QD Female	1
5	NA40A	3/16" HP Black Solution Hose (Sold per Inch)	96"
6	AH01	1/8" Hose End for 3/16" hose	1
7	AH02	1/4" Hose End for 3/16" hose	1
8	100003	Wire Tie Black 7"	5
9	AH90	3/8" LP Gray Solution Hose (Sold per foot)	0.5
10	PMV124V5	Solution Valve with lever & mounting bracket	1
11	PMF8002	Tee Jet for hand tool 8002	1
12	PMF011	Retaining Plate for jet on hand tool	1
13	BR304	Compression fitting 1/8" MPT	1
NS	PMV124V5B	Valve Repair Kit	1