

Dustless

DustBuddie® XP for grinding with angle grinders

Save Time
& Money in
Clean Up



OSHA
SILICA RULE
EPA RRP

5" Model D5835
7" Model D5850



Features:

- 5" Model fits 4" - 6" grinders and 7" Model fits 7" - 9" grinders
- **Universal mounting** system fits a wide variety of grinders from major brands
- Durable construction will withstand daily wear and tear
- Sliding front cover can be retracted for grinding against walls
- Patented design only requires 2-steps to mount and be ready to work

DustBuddie XP includes:

- (1) shroud
- (1) zip tie
- (3) height adjustment spacers
- (1) 18" flexible hose

- 7" shroud only:
(1) swivel cuff for common hose sizes

Without Dust Collection



With Dust Collection



Fits grinders made by Dewalt®, Milwaukee®, Bosch®, Makita®, Metabo®, Ryobi®, Ridgid®, and more...

Dustless Technologies and this product are not affiliated, connected, associated with, sponsored, endorsed, or approved by any of DEWALT Power Tools and Accessories, Milwaukee Tool, Makita, Metabowerke GMBH, RIDGID Inc, Ryobi Limited, or Robert Bosch GMBH.

DEWALT® is a registered trademark of DEWALT Power Tools and Accessories

MILWAUKEE® is a registered trademark of MILWAUKEE TOOL.

MAKITA® is a registered trademark of MAKITA.

METABO® is a registered trademark of Metabowerke GMBH (Metabo).

RYOBI® is a registered trademark of Ryobi Limited.

The RIDGID® trademark and logo are registered trademarks of Ridgid, Inc. in the U.S. and other countries.

WARNING! If using this product in the removal of lead paint, a Dustless® HEPA vacuum must be used. The removal of old paint may generate dust or fumes that contain lead. Exposure to lead may cause brain damage or other adverse health effects, especially in young children and pregnant women. Follow all federal, state, and local laws including the U.S. Environmental Protection Agency's Renovation, Repair and Painting law or similar state law.

★ Designed in the US ★
Assembled from US & Imported Parts

800.568.3949
www.DustlessTools.com

Dustless
TECHNOLOGIES

Dustless® OSHA Silica Rule Compliance Guide

When surface grinding with a hand-held grinder, **OSHA** requires two items:

- ✓ A commercially available dust collection shroud attached to the worker's tool
- ✓ A 99% efficient dust collection system that provides 25 CFM* per inch of wheel diameter and includes a filter cleaning mechanism

*Cubic feet per minute of air flow

Dustless Technologies makes the **most universal** and **most cost-effective** OSHA-compliant dust collection systems on the market. No need to replace your existing tools!

When grinding with a **4" - 6"** angle grinder and a grinding wheel up to **5"**



DustBuddie XP Dust Shroud
(5" Model D5835)



Wet+Dry
DustlessVac®
(Model D1603)
130 CFM

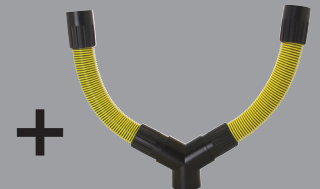
When grinding with a **7" - 9"** angle grinder and a grinding wheel up to **7"**



DustBuddie XP
Dust Shroud
(7" Model D5850)



Wet+Dry
DustlessVac®
(Model D1603)
+
HEPA Wet+Dry
DustlessVac®
(Model D1606)*
260 CFM



Y-Connector Kit
(D0014)

*The most affordable option is to combine two Wet+Dry DustlessVacs (D1603). However, OSHA requires a HEPA vacuum (D1606) for housekeeping tasks and for vacuuming drill holes.



NOTE: When grinding **indoors** with a grinder of **any size**, OSHA requires protection rated with an approved protection factor (APF) of 10 for shifts greater than 4 hours (regardless of dust control systems). APF 10 includes half masks and some dust masks.

Consult your safety equipment supplier for details

For detailed OSHA Silica Rule information, visit www.DustlessTools.com

SF064_0517